

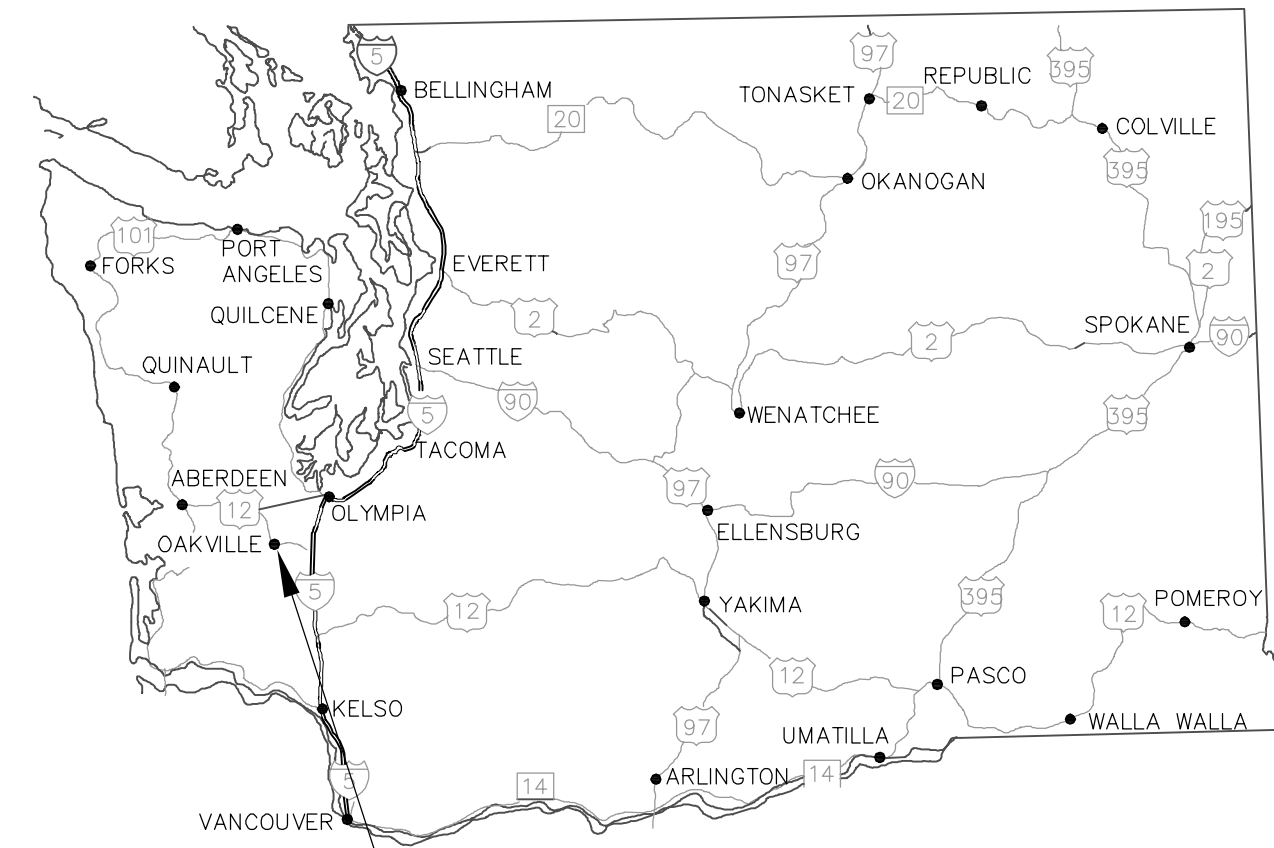
2020 PAVEMENT PRESERVATION PROJECT

PROJECT NUMBER 60264
SEAL COAT, PAVEMENT MARKINGS

HOWANUT RD., NIEDERMAN RD.

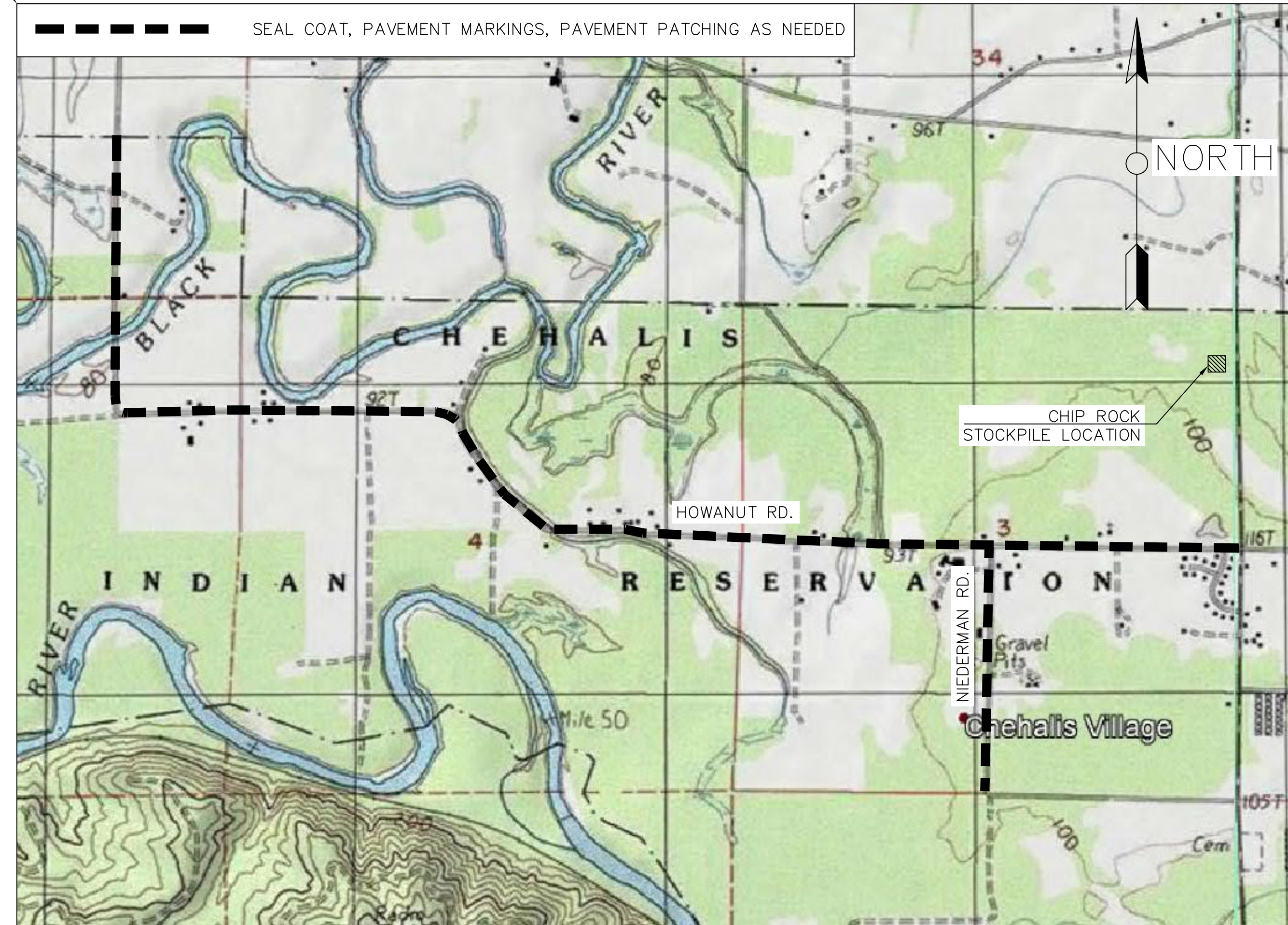
LENGTH = 3.35 MILES
GRAYS HARBOR COUNTY, WASHINGTON

CONFEDERATED TRIBES OF THE
CHEHALIS INDIAN RESERVATION



KEY MAP OF WASHINGTON

PROJECT VICINITY MAP



T15N, R4W, SECTION 3, 4, & 5 WILLAMETTE MERIDIAN

T16N, R4W, SECTION 32 WILLAMETTE MERIDIAN

SCALE: 1"=1000'

SHEET INDEX

1	COVER SHEET
2	QUANTITIES
3	SEAL COAT PLAN
4	PAVEMENT MARKING PLAN
5	PAVEMENT MARKING DETAILS

DESIGN DATA

FUNCTIONAL CLASS: RURAL COLLECTOR (HOWANUT / NIEDERMAN)
DESIGN SPEED: 35MPH (ALSO POSTED SPEED)
DESIGN ADT: 940
PASSING SITE DISTANCE: 550FT
* 35 MPH DESIGN SPEED EXCEPTION BY BIA FOR THE 2012 HOWANUT REALIGNMENT PROJECT. AASHTO GUIDELINES SHOWS A MINIMUM OF 50MPH

STANDARD SPECIFICATIONS

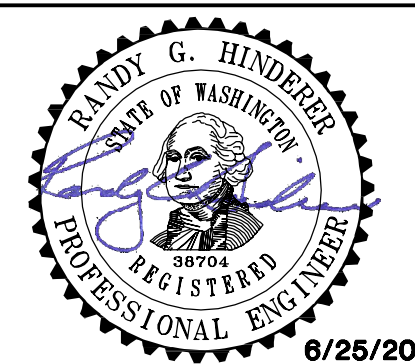
ALL MATERIALS AND WORKMANSHIP SHALL BE IN ACCORDANCE WITH THE REQUIREMENTS OF THE 2020 STATE OF WASHINGTON, DEPARTMENT OF TRANSPORTATION STANDARD SPECIFICATIONS FOR ROAD, BRIDGE AND MUNICIPAL CONSTRUCTION.

CALL 48 HOURS
BEFORE YOU DIG
1-800-424-5555

DATUM

NONE

CHEHALIS - 2020 PAVEMENT PRESERVATION
CONFEDERATED TRIBES OF THE CHEHALIS RESERVATION
GRAYS HARBOR COUNTY, WASHINGTON
COVER SHEET



RED PLAINS PROFESSIONAL, INC.
2103 NE 120TH STREET
SUITE 201
VANCOUVER, WA 98666
TEL: (360) 448-7999
FAX: (360) 258-0274
www.red-plains.com

NO.	DATE	DESCRIPTION

PROJ. 60264
SHT. 1

OWNER

CONFEDERATED TRIBES OF THE CHEHALIS RESERVATION
PO BOX 536
OAKVILLE, WA 98568
PH: 360-709-1862
FAX: 360-273-5914
CONTACT: BRIAN VON CLÜCK

GENERAL NOTES

1. WORKMANSHIP AND MATERIALS SHALL BE IN GENERAL ACCORDANCE WITH THE 2020 WSDOT STANDARD SPECIFICATIONS FOR ROAD, BRIDGE, AND MUNICIPAL CONSTRUCTION.
2. TRAFFIC CONTROL SHALL BE PROVIDED IN ACCORDANCE WITH THE MUTCD AND AN APPROVED MAINTENANCE OF TRAFFIC PLAN. MAINTENANCE OF TRAFFIC PLAN SHALL BE SUBMITTED AT LEAST 14 DAYS PRIOR TO WORK. FULL ROAD CLOSURES ARE NOT PERMISSIBLE.
3. CONTRACTOR MAY UTILIZE STOCKPILE LOCATION AS IDENTIFIED ON THE COVER SHEET. COORDINATE ACTIVITIES WITH THE TRIBE.
4. PRIOR TO PLACEMENT OF SEAL COAT, MANHOLE COVERS, EXISTING THERMOPLASTIC MARKINGS, MONUMENTS, CONCRETE BRIDGE DECKS, AND OTHER ITEMS AS IDENTIFIED IN THE FIELD SHALL BE PROTECTED WITH FELT PAPER.
5. THE ROADWAY SURFACE SHALL BE FOGSEALED WITHIN 7 DAYS OF SEAL COAT APPLICATION.
6. WITHIN 1 WEEK OF FINAL FOGSEALING, PROVIDE CENTERLINE AND FOGLINE STRIPING. A SECOND COAT SHALL BE APPLIED, IN THE OPPOSITE DIRECTION, BETWEEN 4 AND 6 WEEKS AFTER THE FIRST COAT.

ESTIMATED QUANTITIES

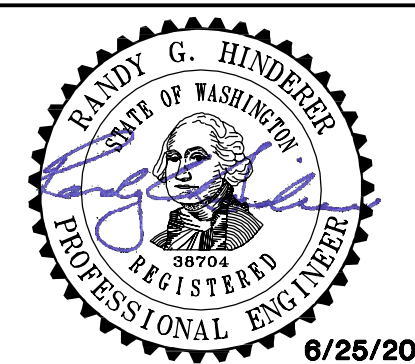
CTCR -- 2020 HOWANUT PAVEMENT RESTORATION					
ITEM NO.	WSDOT ITEM NO.	ITEM DESCRIPTION	NOTES	QUANTITY	UNIT
1	0001	MOBILIZATION		1	L.S.
2	0209	REMOVING RAISED PAVEMENT MARKER		1	L.S.
3	5295	EMULSIFIED ASPHALT CRS-2	1	45	TON
4	5340	ASPHALT FOR FOG SEAL	2	14	TON
5	5436	FURNISHING AND PLACING CRUSHED SCREENING 3/8" TO NO.4	3, 4	296	TON
6	6806	PAINT LINE		52,968	L.F.
7	6857	PLASTIC CROSSWALK LINE		160	S.F.
8	6859	PLASTIC STOP LINE		23	L.F.
9	6884	RAISED PAVEMENT MARKER TYPE 2		2.22	HUND
10	6895	TEMPORARY PAVEMENT MARKING--SHORT DURATION		52,968	L.F.
11	6971	PROJECT TEMPORARY TRAFFIC CONTROL		1	L.S.
12	SP	PAVEMENT PATCHING	5	1	S.Y.

PAY ITEM NOTES

1. QUANTITY ESTIMATED WITH AN APPLICATION RATE OF 0.45 GAL. PER S.Y.
2. QUANTITY ESTIMATED WITH AN APPLICATION RATE OF 0.14 GAL. PER S.Y.
3. QUANTITY ESTIMATED WITH AN APPLICATION RATE OF 25 LB PER S.Y.
4. PAY ITEM INCLUDES THE COST OF WATER.
5. QUANTITY FOR OBTAINING A UNIT PRICE ONLY AND DOES NOT REFLECT AN ESTIMATED QUANTITY. BID ITEM INCLUDES THE COST OF ALL NECESSARY WORK, MATERIAL, AND EQUIPMENT NEEDED TO COMPLETE THE WORK.

Z:\PROJECTS\2024 - DEMALS - 2020 PAVEMENT PRES - HOWANUT PRES - HOWANUT118.DWG (PRODUCTION) \ASCDWG 6/24/2020 3:07:35 PM by:ascdm\m.nabala

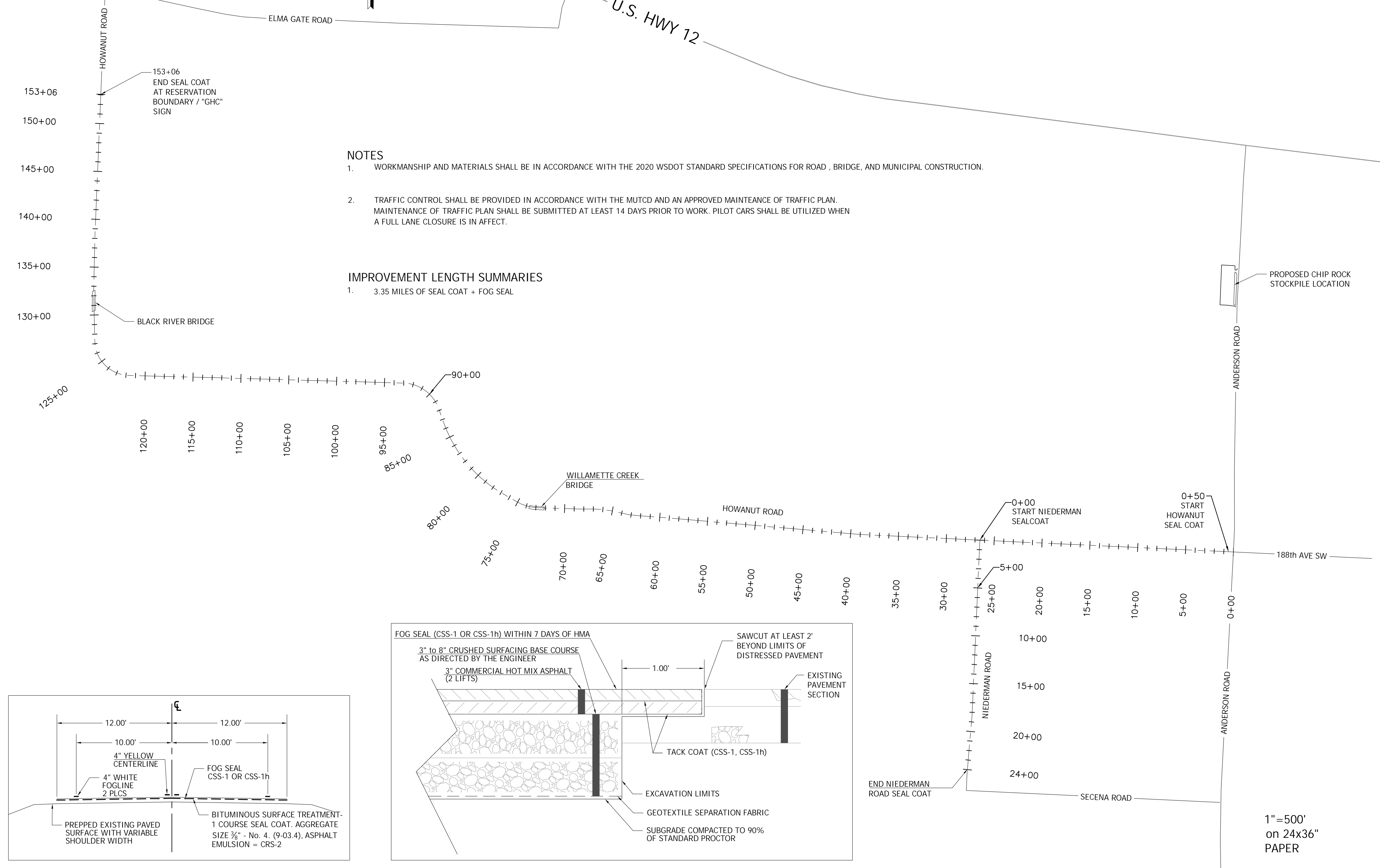
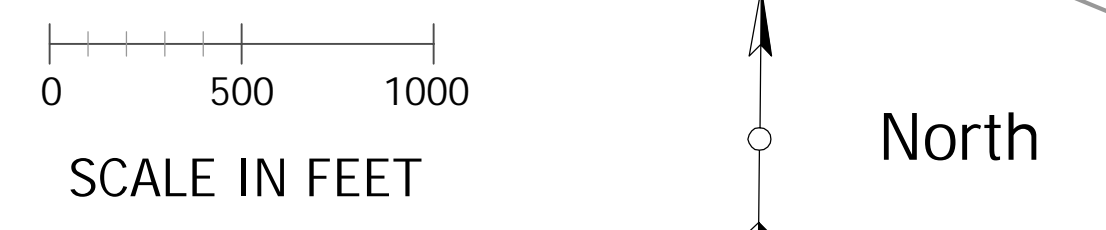
CHEHALIS - 2020 PAVEMENT PRESERVATION
 CONFEDERATED TRIBES OF THE CHEHALIS RESERVATION
 GRAYS HARBOR COUNTY, WASHINGTON
QUANTITIES



RED PLAINS PROFESSIONAL, INC.
 2103 NE 129TH STREET
 SUITE 201
 VANCOUVER, WA 98666
 TEL: (360) 448-7999
 FAX: (360) 258-0274
 www.red-plains.com

NO.	DATE	REVISIONS DESCRIPTION

PROJ. 60264
 SHT. 2

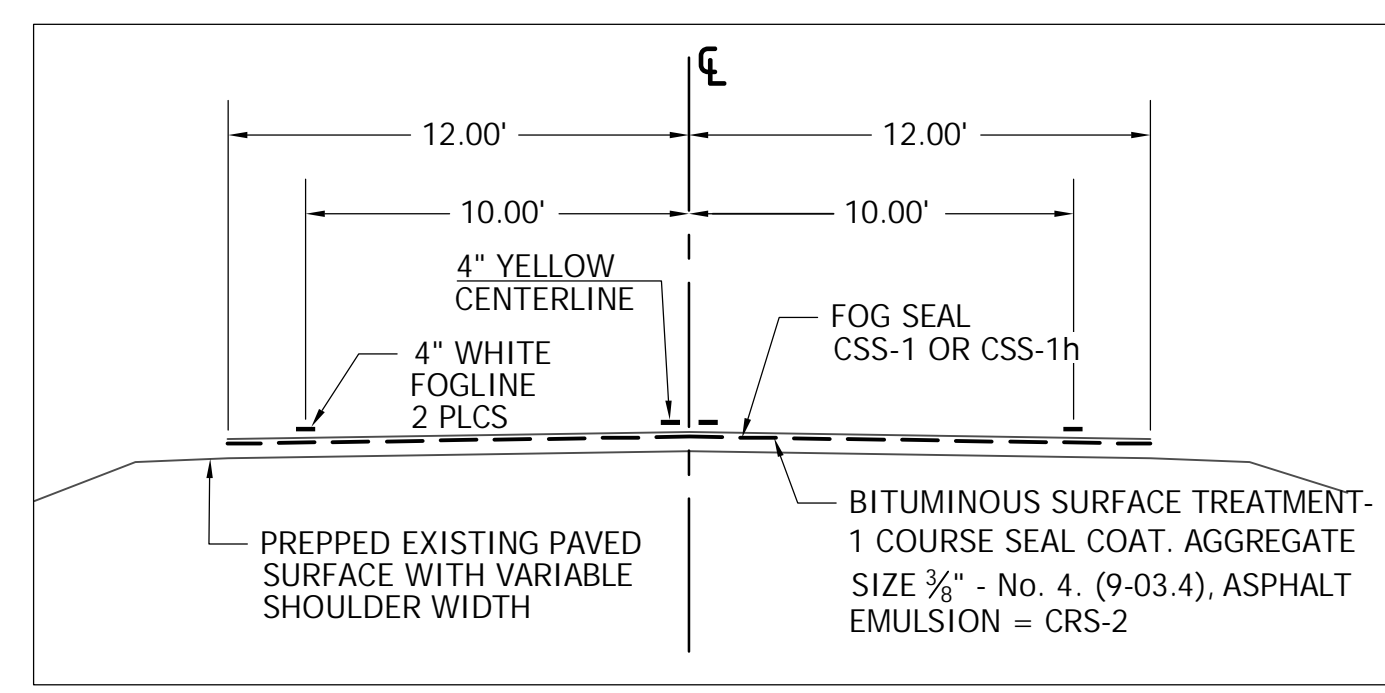


NOTES

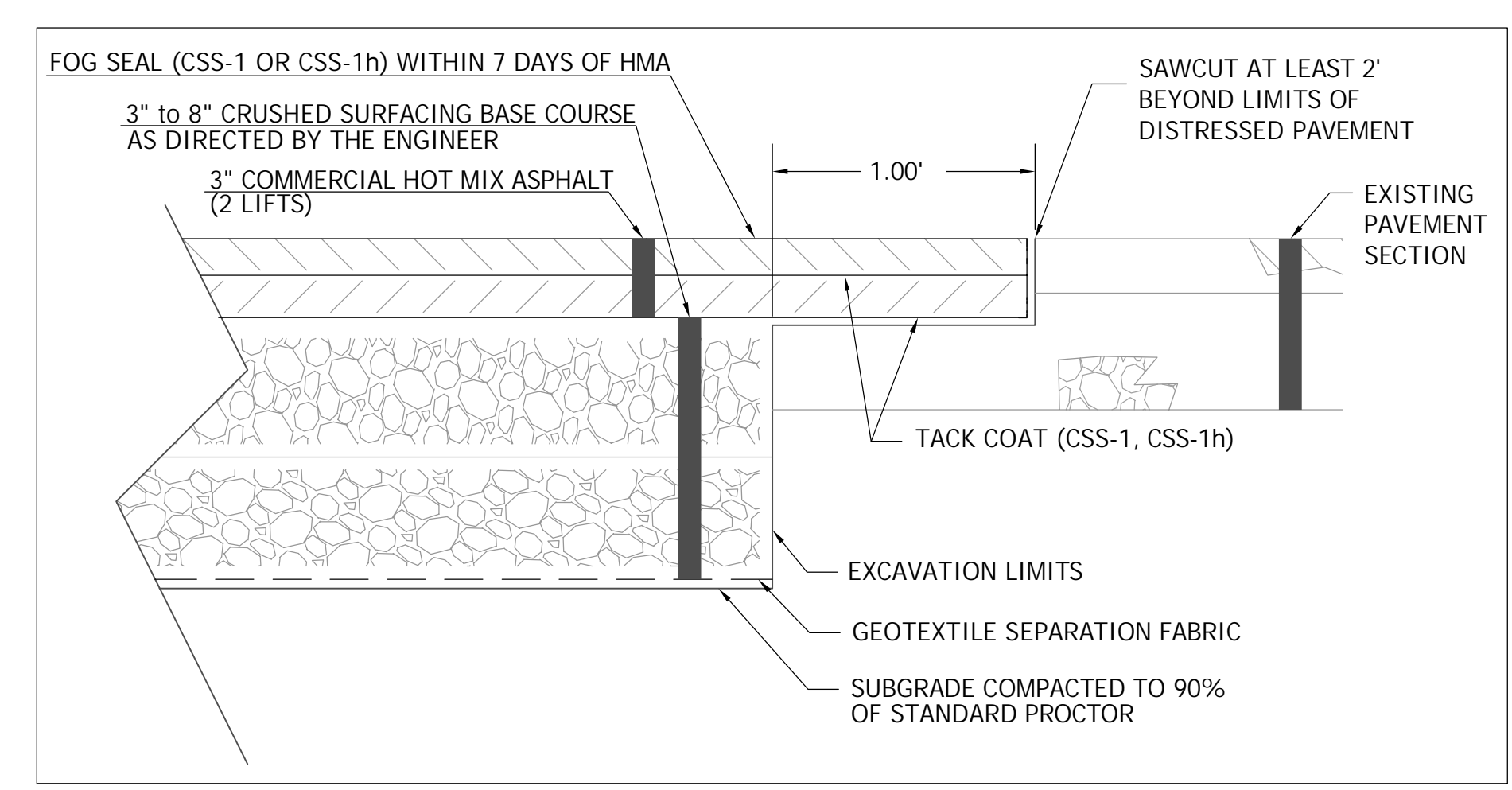
1. WORKMANSHIP AND MATERIALS SHALL BE IN ACCORDANCE WITH THE 2020 WSDOT STANDARD SPECIFICATIONS FOR ROAD, BRIDGE, AND MUNICIPAL CONSTRUCTION.
2. TRAFFIC CONTROL SHALL BE PROVIDED IN ACCORDANCE WITH THE MUTCD AND AN APPROVED MAINTENANCE OF TRAFFIC PLAN. MAINTENANCE OF TRAFFIC PLAN SHALL BE SUBMITTED AT LEAST 14 DAYS PRIOR TO WORK. PILOT CARS SHALL BE UTILIZED WHEN A FULL LANE CLOSURE IS IN AFFECT.

IMPROVEMENT LENGTH SUMMARIES

1. 3.35 MILES OF SEAL COAT + FOG SEAL



BST- SEAL COAT TYPICAL SECTION- HOWANUT AND NIEDERMAN ROADS

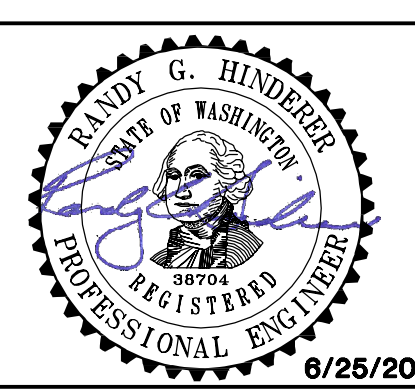


PAVEMENT PATCHING DETAIL (AS NEEDED)

NTS

1" = 500'
on 24x36"
PAPER

CHEHALIS - 2020 PAVEMENT PRESERVATION
CONFEDERATED TRIBES OF THE CHEHALIS RESERVATION
GRAYS HARBOR COUNTY, WASHINGTON
SEAL COAT PLAN

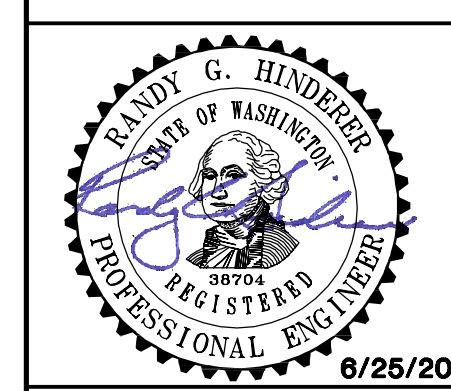


RED PLAINS PROFESSIONAL, INC.
2103 NE 129TH STREET
SUITE 201
VANCOUVER, WA 98666
TEL: (360) 448-7999
FAX: (360) 258-0274
www.red-plains.com

NO.	DATE	REVISIONS DESCRIPTION

PROJ. 60264
SHT. 3

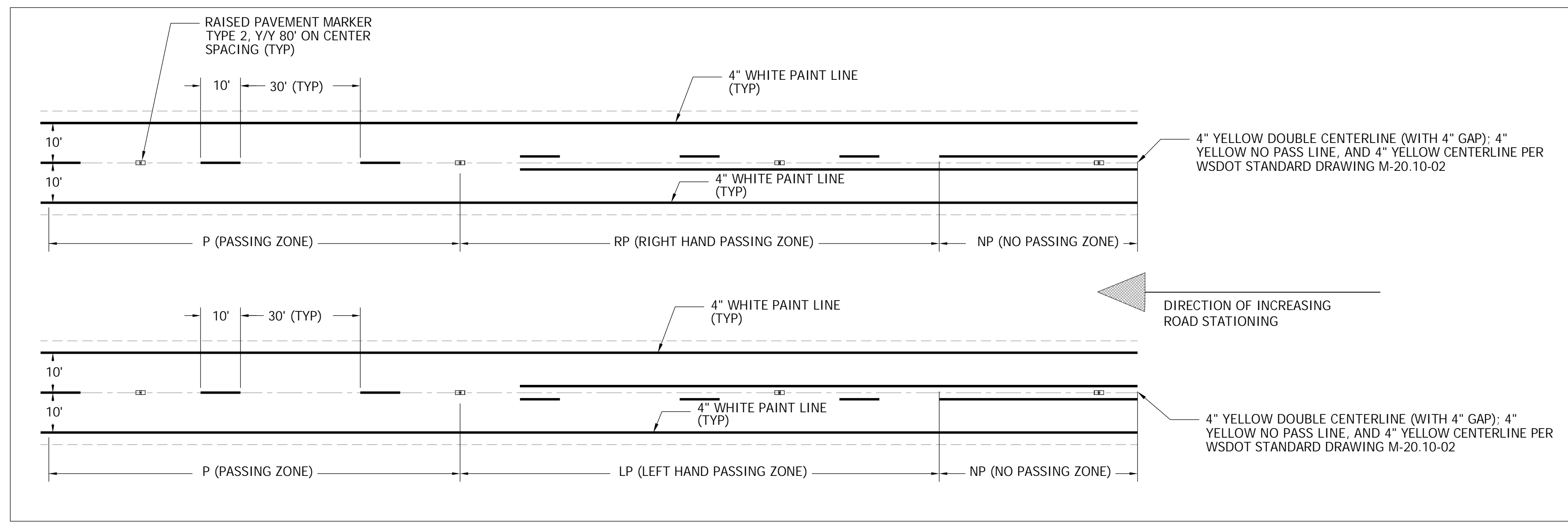
Z:\PROJECTS\2024 - CHEHALIS - 2020 PAVEMENT PRES - HOWANUT\18_0000\PRODUCTION\AKS\DWG 6/24/2020 3:07:36 PM by:rsamm@redplains.com



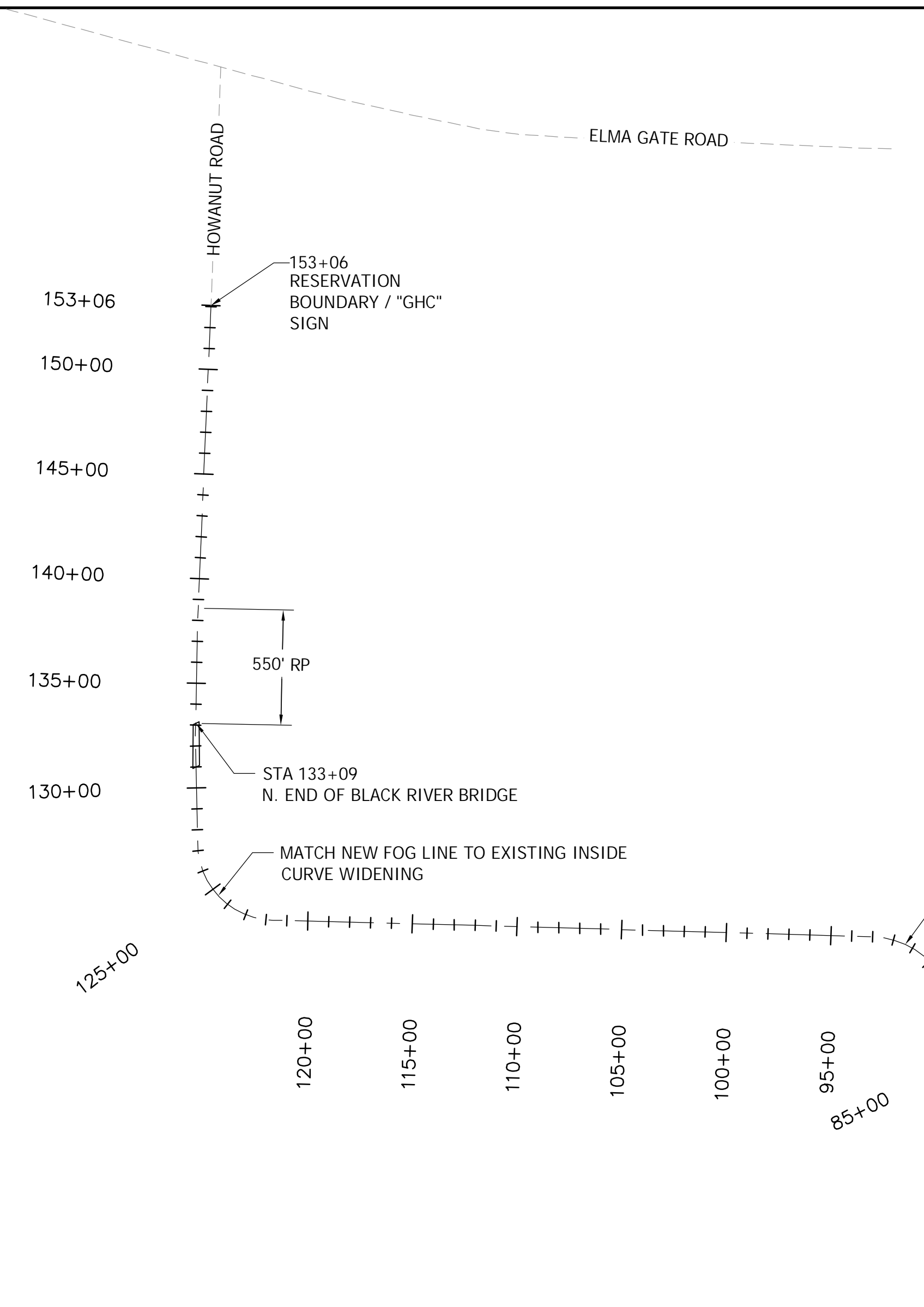
RED PLAINS PROFESSIONAL, INC.
 2103 NE 129TH STREET
 SUITE 201
 VANCOUVER, WA 98666
 TEL: (360) 448-7999
 FAX: (360) 258-0274
 www.red-plains.com

NO.	DATE	REVISIONS DESCRIPTION

PROJ. 60264
 SHT. 4



DETAIL B: STRIPING PATTERN

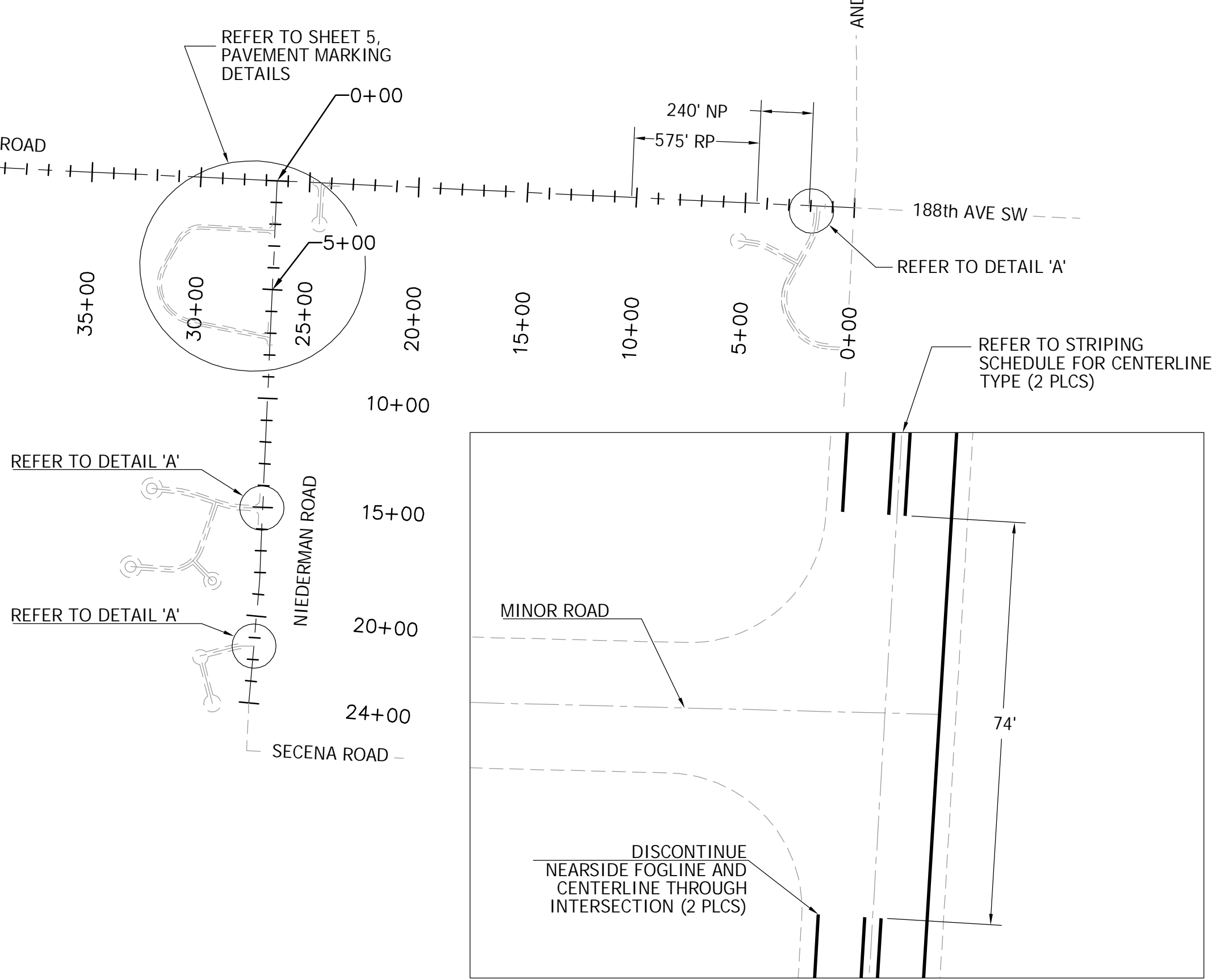


ROADWAY CENTERLINE STRIPING - REFER TO DETAIL B THIS SHEET

ROAD	STATION START	STATION END	ZONE
HOWANUT	0+50	4+47	NP
	4+47	10+22	RP
	10+22	21+35	P
	21+35	23+10	LP
	23+10	27+95	NP
	27+95	32+45	RP
	32+45	57+28	P
	57+28	63+00	LP
	63+00	133+09	NP
133+09	138+59	RP	
138+59	153+06	P	
NIEDERMAN	0+00	5+60	NP
	5+60	6+15	RP
	6+15	24+00	P

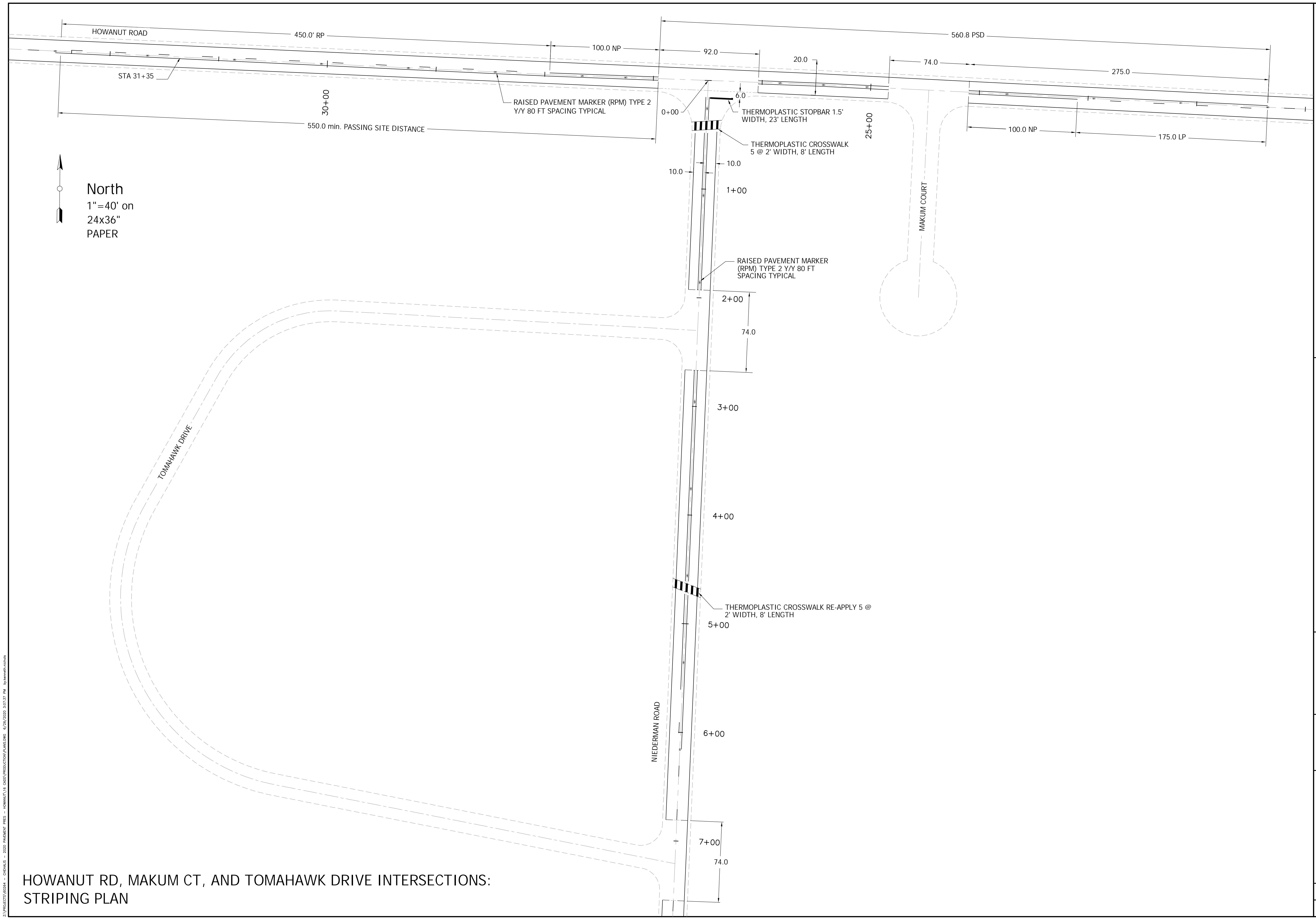
ROADWAY FOGLINE

ROAD	STATION START	STATION END
HOWANUT	0+50	153+06
NIEDERMAN	0+00	24+00



DETAIL A: TYPICAL 'T' INTERSECTION STRIPING PLAN

Z:\PROJECTS\60264 - CHEHALIS - 2020 PAVEMENT PRES - HOWANUT RD - 0000\PRODUCTION\AKLAW.DWG 6/24/2020 3:07:36 PM by:raemh.nahab



North
 1" = 40' on
 24x36"
 PAPER

Z:\PROJECTS\60264 - CHEHALIS - 2020 PAVEMENT PRES - HOWANUT RD - HOWANUT RD - 6/24/2020 3:07:37 PM by: ssmw@redplains.com

HOWANUT RD, MAKUM CT, AND TOMAHAWK DRIVE INTERSECTIONS:
 STRIPING PLAN

CHEHALIS - 2020 PAVEMENT PRESERATION
 CONFEDERATED TRIBES OF THE CHEHALIS RESERVATION
 GRAYS HARBOR COUNTY, WASHINGTON
PAVEMENT MARKING DETAILS



RED PLAINS PROFESSIONAL, INC.
 2103 NE 129TH STREET
 SUITE 201
 VANCOUVER, WA 98666
 TEL: (360) 448-7999
 FAX: (360) 258-0274
 www.red-plains.com

NO.	DATE	REVISIONS DESCRIPTION

PROJ. 60264
 SHT. 5