

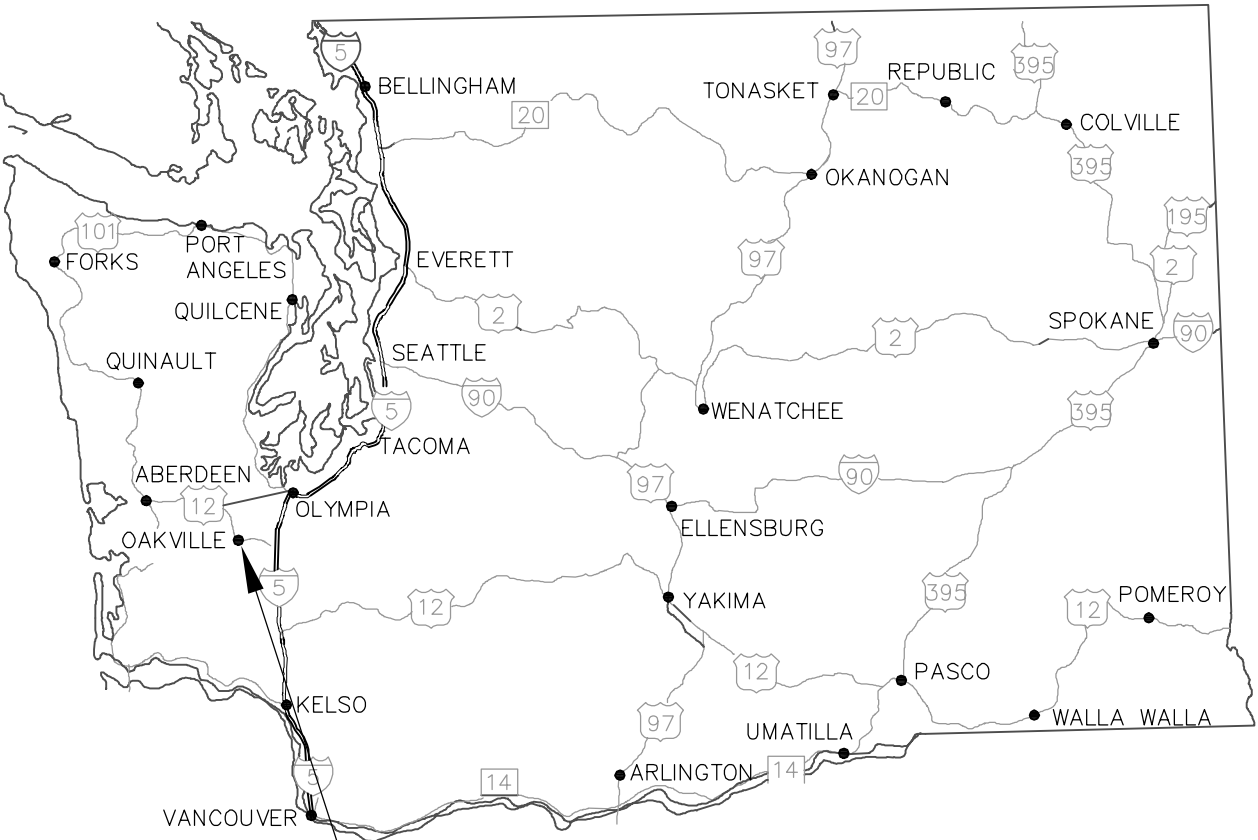
# 2020 PAVEMENT PRESERVATION PROJECT

PROJECT NUMBER 60264  
SEAL COAT, PAVEMENT MARKINGS

HOWANUT RD., NIEDERMAN RD.

LENGTH = 3.35 MILES  
GRAYS HARBOR COUNTY, WASHINGTON

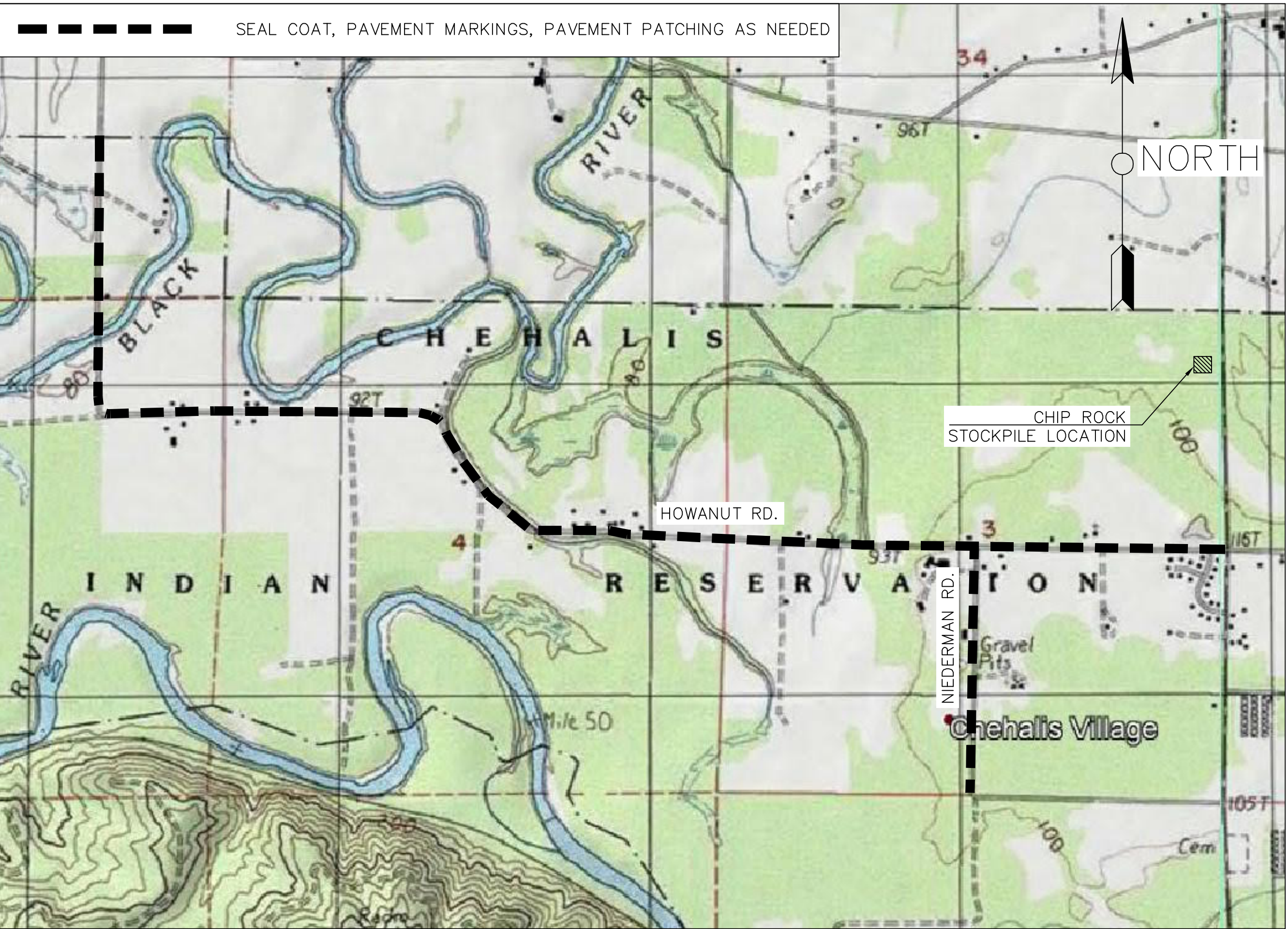
CONFEDERATED TRIBES OF THE  
CHEHALIS INDIAN RESERVATION



KEY MAP OF WASHINGTON

PROJECT VICINITY MAP

SEAL COAT, PAVEMENT MARKINGS, PAVEMENT PATCHING AS NEEDED



T15N, R4W, SECTION 3, 4, & 5 WILLAMETTE MERIDIAN

T16N, R4W, SECTION 32 WILLAMETTE MERIDIAN

SCALE: 1"=1000'

## SHEET INDEX

1	COVER SHEET
2	QUANTITIES
3	SEAL COAT PLAN
4	PAVEMENT MARKING PLAN
5	PAVEMENT MARKING DETAILS

## DESIGN DATA

FUNCTIONAL CLASS: RURAL COLLECTOR (HOWANUT / NIEDERMAN)  
DESIGN SPEED: 35MPH (ALSO POSTED SPEED)  
DESIGN ADT: 940  
PASSING SITE DISTANCE: 550FT  
\* 35 MPH DESIGN SPEED EXCEPTION BY BIA FOR THE 2012  
HOWANUT REALIGNMENT PROJECT. AASHTO GUIDELINES SHOWS  
A MINIMUM OF 50MPH

## STANDARD SPECIFICATIONS

ALL MATERIALS AND WORKMANSHIP SHALL BE IN ACCORDANCE WITH  
THE REQUIREMENTS OF THE 2020 STATE OF WASHINGTON,  
DEPARTMENT OF TRANSPORTATION STANDARD SPECIFICATIONS FOR  
ROAD, BRIDGE AND MUNICIPAL CONSTRUCTION.

CALL 48 HOURS  
BEFORE YOU DIG  
1-800-424-5555

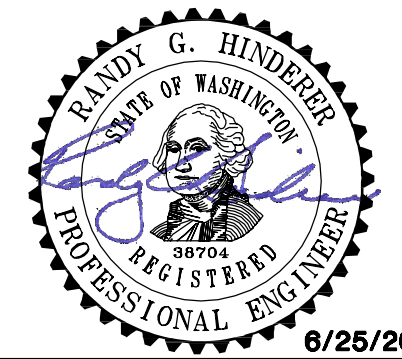
## DATUM

NONE

## OWNER

CONFEDERATED TRIBES OF THE CHEHALIS RESERVATION  
PO BOX 536  
OAKVILLE, WA 98568  
PH: 360-709-1862  
FAX: 360-273-5914  
CONTACT: BRIAN VON CLÜCK

CHEHALIS - 2020 PAVEMENT PRESERVATION  
CONFEDERATED TRIBES OF THE CHEHALIS RESERVATION  
GRAYS HARBOR COUNTY, WASHINGTON  
COVER SHEET



RED PLAINS PROFESSIONAL, INC.  
2103 NE 129TH STREET  
SUITE 201  
VANCOUVER, WA 98686  
TEL: (360) 448-7999  
FAX: (360) 258-0274  
www.red-plains.com

NO.	DATE	REVISIONS	DESCRIPTION

PROJ. 60264

SHT. 1



## GENERAL NOTES

1. WORKMANSHIP AND MATERIALS SHALL BE IN GENERAL ACCORDANCE WITH THE 2020 WSDOT STANDARD SPECIFICATIONS FOR ROAD, BRIDGE, AND MUNICIPAL CONSTRUCTION.
2. TRAFFIC CONTROL SHALL BE PROVIDED IN ACCORDANCE WITH THE MUTCD AND AN APPROVED MAINTENANCE OF TRAFFIC PLAN. MAINTENANCE OF TRAFFIC PLAN SHALL BE SUBMITTED AT LEAST 14 DAYS PRIOR TO WORK. FULL ROAD CLOSURES ARE NOT PERMISSIBLE.
3. CONTRACTOR MAY UTILIZE STOCKPILE LOCATION AS IDENTIFIED ON THE COVER SHEET. COORDINATE ACTIVITIES WITH THE TRIBE.
4. PRIOR TO PLACEMENT OF SEAL COAT, MANHOLE COVERS, EXISTING THERMOPLASTIC MARKINGS, MONUMENTS, CONCRETE BRIDGE DECKS, AND OTHER ITEMS AS IDENTIFIED IN THE FIELD SHALL BE PROTECTED WITH FELT PAPER.
5. THE ROADWAY SURFACE SHALL BE FOGSEALED WITHIN 7 DAYS OF SEAL COAT APPLICATION.
6. WITHIN 1 WEEK OF FINAL FOGSEALING, PROVIDE CENTERLINE AND FOGLINE STRIPING. A SECOND COAT SHALL BE APPLIED IN THE OPPOSITE DIRECTION BETWEEN 4 AND 6 WEEKS AFTER THE FIRST COAT.

## ESTIMATED QUANTITIES

CTCR -- 2020 HOWANUT PAVEMENT RESTORATION					
ITEM NO.	WSDOT ITEM NO.	ITEM DESCRIPTION	NOTES	QUANTITY	UNIT
1	0001	MOBILIZATION		1	L.S.
2	0209	REMOVING RAISED PAVEMENT MARKER		1	L.S.
3	5295	EMULSIFIED ASPHALT CRS--2P	1	109	TON
4	5340	ASPHALT FOR FOG SEAL	2	28	TON
5	5436	FURNISHING AND PLACING CRUSHED SCREENING 3/8" TO NO.4	3, 4	707	TON
6	6806	PAINT LINE		52,968	L.F.
7	6857	PLASTIC CROSSWALK LINE		160	S.F.
8	6859	PLASTIC STOP LINE		23	L.F.
9	6884	RAISED PAVEMENT MARKER TYPE 2		2.22	HUND
10	6895	TEMPORARY PAVEMENT MARKING--SHORT DURATION		52,968	L.F.
11	6971	PROJECT TEMPORARY TRAFFIC CONTROL		1	L.S.
12	SP	PAVEMENT PATCHING	5	1	S.Y.

### PAY ITEM NOTES

1. QUANTITY ESTIMATED WITH AN APPLICATION RATE OF 0.55 GAL. PER S.Y.
2. QUANTITY ESTIMATED WITH AN APPLICATION RATE OF 0.14 GAL. PER S.Y.
3. QUANTITY ESTIMATED WITH AN APPLICATION RATE OF 30 LB PER S.Y.
4. PAY ITEM INCLUDES THE COST OF WATER.
5. QUANTITY FOR OBTAINING A UNIT PRICE ONLY AND DOES NOT REFLECT AN ESTIMATED QUANTITY. BID ITEM INCLUDES THE COST OF ALL NECESSARY WORK, MATERIAL AND EQUIPMENT NEEDED TO COMPLETE THE WORK.

\\PROJETS\60264 - CHEHALIS - 2020 PAVEMENT PRES - HOWANUT\16 CADD\PRODUCTION\PLANS.DWG 7/14/2020 8:42:36 AM by:Kenneth.Nichols

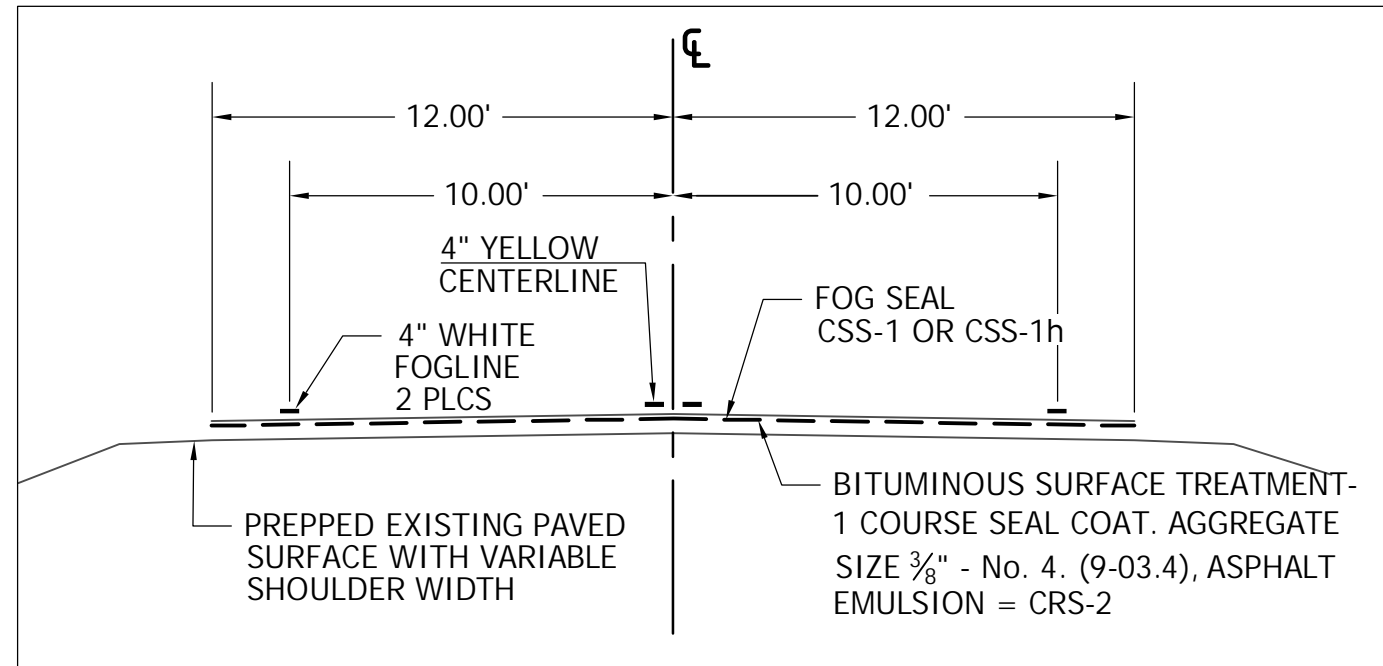
**CHEHALIS – 2020 PAVEMENT PRESERVATION  
CONFEDERATED TRIBES OF THE CHEHALIS RESERVATION  
GRAYS HARBOR COUNTY, WASHINGTON  
QUANTITIES**



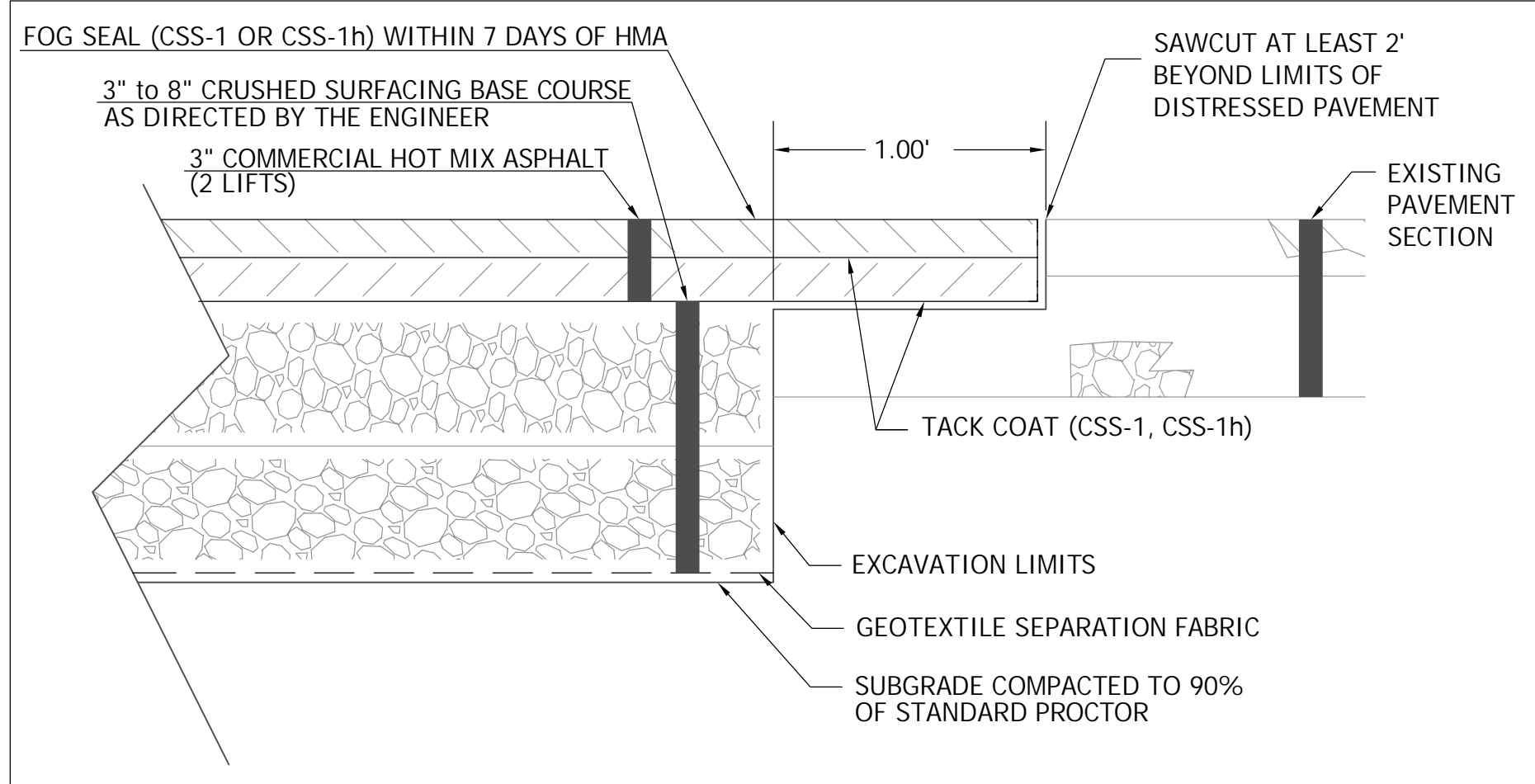
RED PLAINS PROFESSIONAL, INC.  
2103 NE 129TH STREET  
SUITE 201  
VANCOUVER, WA. 98686  
TEL: (360) 448-7999  
FAX: (360) 258-0274

[illegible]

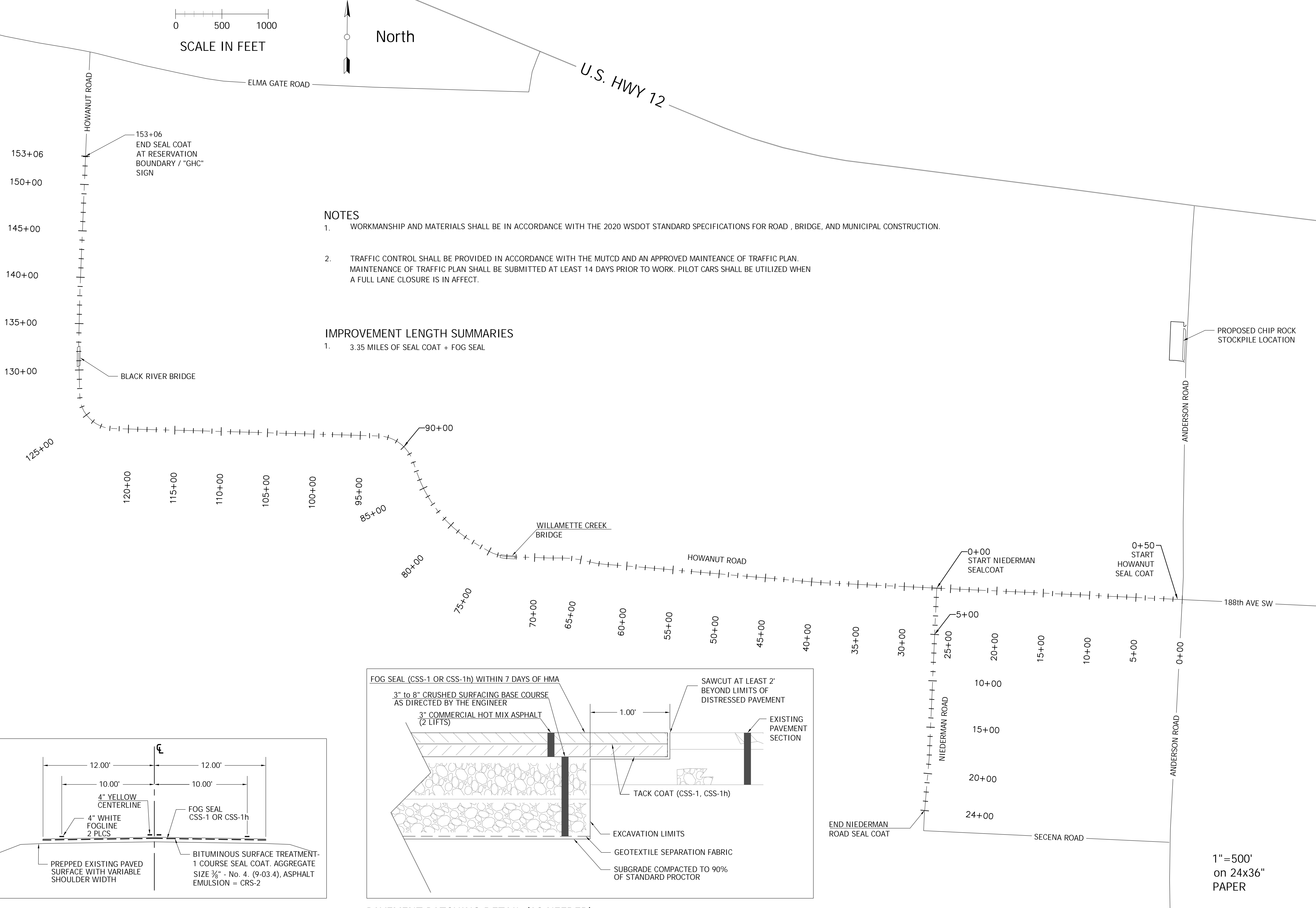
Z:\PROJECTS\60264 - CHEHALIS - 2020 PAVEMENT PRES - HOWANUT 16 CADD\PRODUCTION\AKS.DWG 7/14/2020 8:48:37 AM By: Kenneth Nichols



BST- SEAL COAT TYPICAL SECTION-  
HOWANUT AND NIEDERMAN ROADS



PAVEMENT PATCHING DETAIL (AS NEEDED)  
NTS



NOTES

1. WORKMANSHIP AND MATERIALS SHALL BE IN ACCORDANCE WITH THE 2020 WSDOT STANDARD SPECIFICATIONS FOR ROAD , BRIDGE, AND MUNICIPAL CONSTRUCTION.
2. TRAFFIC CONTROL SHALL BE PROVIDED IN ACCORDANCE WITH THE MUTCD AND AN APPROVED MAINTENANCE OF TRAFFIC PLAN. MAINTENANCE OF TRAFFIC PLAN SHALL BE SUBMITTED AT LEAST 14 DAYS PRIOR TO WORK. PILOT CARS SHALL BE UTILIZED WHEN A FULL LANE CLOSURE IS IN AFFECT.

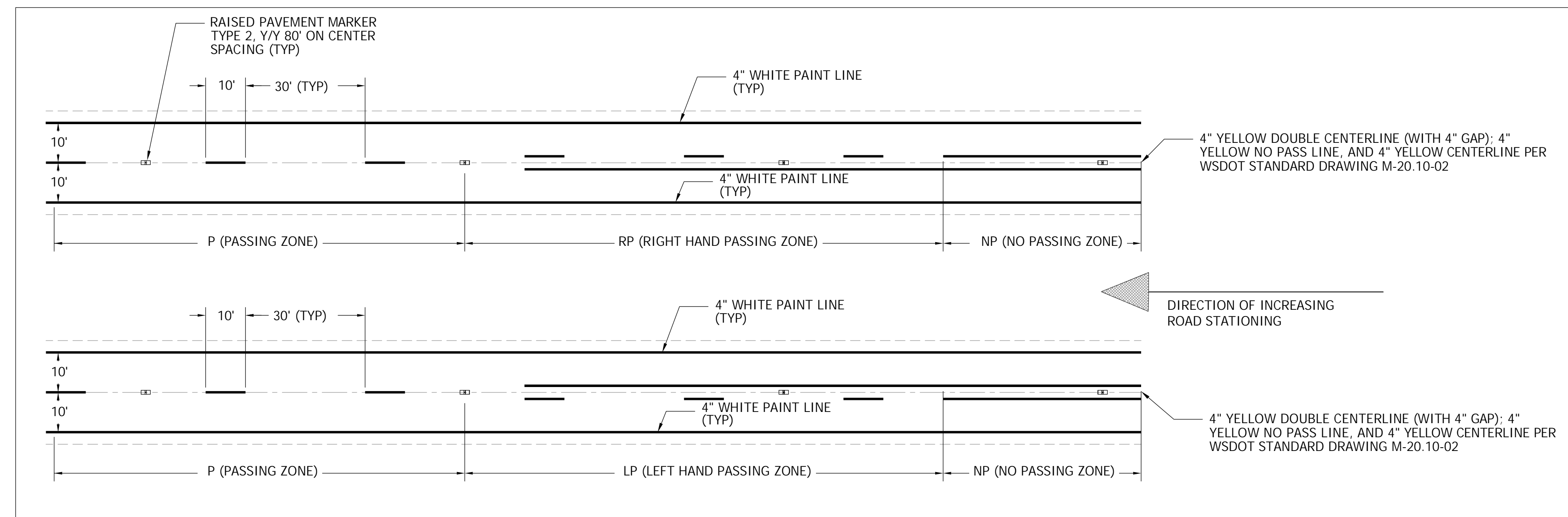
IMPROVEMENT LENGTH SUMMARIES

1. 3.35 MILES OF SEAL COAT + FOG SEAL

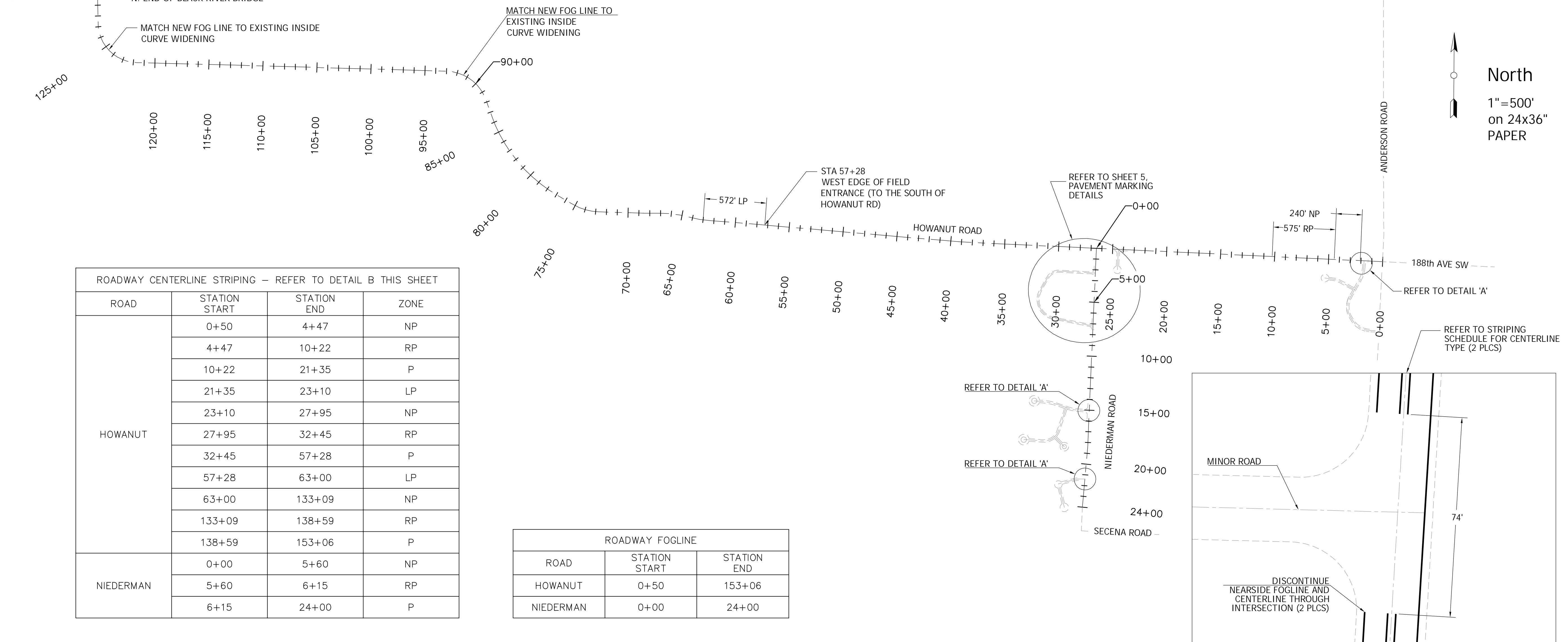
1"=500'  
on 24x36"  
PAPER

NO.	DATE	REVISIONS	DESCRIPTION





### DETAIL B: STRIPING PATTERN



### DETAIL A: TYPICAL 'T' INTERSECTION STRIPING PLAN

